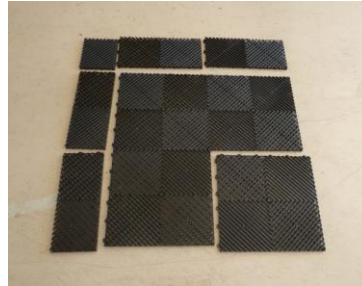


D40- Size 40"X 40". Heights: 21",28",35". Stairs: 2 steps +deck 21", 3 steps +deck 28", 4 steps+deck 35". Stairs: 10"deep X 30:wide on 7" risers with 2 hand railings.

There are 6 possible setups for stairs of all D40 models:

- 1- Center Entry with stairs offset to left side
- 2- Center Entry with stairs offset to right side**
- 3-Right Side Entry with stairs offset to RV
- 4- Right Side Entry with Stairs offset away from RV
- 5-Left Side Entry with stairs offset to RV
- 6- Left Side Entry with stairs offset away from RV.

Tiles Used: 9 tiles (5 need cutting)



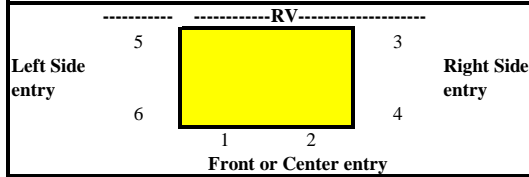
Row-3 3 cut off tiles allways up to RV

Row-2 2 full tiles plus 1 cutof

Row-1 2 full 15 3/4 x 15 3/4 tiles plus 1 cut off

Optional Threshold (1 full and 2 cut) optional cut down from 3 inch to 1 inch

13 total tile pieces for NT-40. Row 1 tiles can move depending on stair set ups.



Center Entry (2)

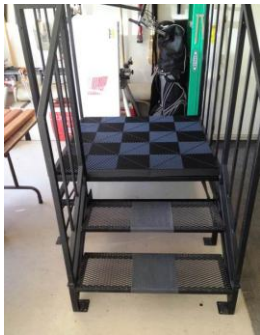
Note: Make sure tabs are like picture so all tiles snap together simply.

cuts size is 39 inches from front to rear (up to RV)
and 38 inches from left to right. IE: 38W x 39L. A 1 inch gap on 3 sides is for deck railings.

Tools: Just about any type saw can cut the tiles. Best is table saw but any saw will work just measure twice and cut once. Simply layout tiles on the deck with the deck railings and measure to cut the 5 tiles. Need maximum cut 38 inches side to side and 39 inches front to back. The extra inch is due to no deck railing at entrance to RV.

Optional threshold. You will receive 3 15 x 3 inch threshold that you can cut down if you wish to use them

If you do not have skill to cut tiles to size HCCR can cut tiles for you for a small fee. We are distributor for SwissTrax tiles and best pricing is shipping direct from their factory.



1-Black Tile set up (2) as Center entry off set right



4- Tiles should fit tight and not slide but if they do slide a little you can use one of the tabs of each row 3 tile and put in a small nut/washer/bolt.
Have to cut the other tab off on Row 2 tiles where Bolt/washer/nut is used.

Install instructions can also be found at: www.hofmannccr.com/gallery

4-Bolt/washer/nut in 3 tiles row 2 if required.

